

# CNC Milling Machine VMC41

## Machine Features:

- Mainly as a starting point to provide users easy and intuitive operation of the new CNC operation.
- Applicable industries: A good helper for parts production, R&D proofing, repair, and school teaching.
- Light weight, does not occupy space, suitable for various occasions.
- Compatible with the processing programs of major brand controllers, and can execute CAD/CAM NC programs, which are suitable for mold cutting, drilling, tapping and machining.



## Controller function :

### PC Monitor Operation



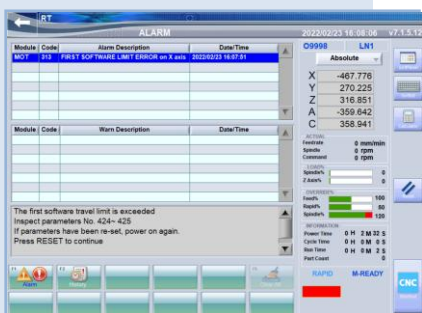
### Conversation Cam



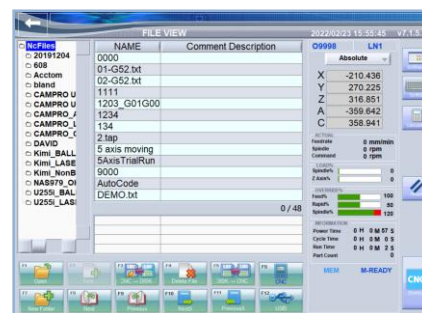
### Tool Setting And Mode



### Troubleshooting Navigation



### G54 coordinate system setting



### File Management



Made in Taiwan, quality assurance.

## Specification Table

Item		Specification
Table size	mm	650 x 230
T slot	mm	3 x 12 x 50
Max. table load	kgs	20
X/Y/Z axis travel	mm	400 x 300 x 400
Distance from spindle nose to work table	mm	60-460
Distance from spindle center to column	mm	220
X/Y/Z axis server motor	kw	X/Y 0.75 / Z 1 (with brake)
G00 Rapid speed	m/min	15
G01Cutting feed	m/min	1-10000
Spindle type:		BT30 / ISO30(Opt.)
Spindle transmission type		Belt
Spindle motor	Kw	2.2
Spindle speed	rpm	8000
Drilling capacity	mm	Φ 12 (Aluminum6061)
Tapping capacity	mm	M12 (Aluminum6061)
Armless Magazine	cm	8 Tools
Air pressure requirements	Kg/cm <sup>2</sup>	6
Power		3Φ 220V / 25A
Machine net weight	kg	1000
Machine size (L x W x H)	cm	150 x120 x 175
Machine packing size (L x W x H)	cm	155 x125 x 180

※ The company reserves the right to revise the contents of the specifications, subject to change without prior notice.

Standard accessories		Option accessories
1. Full cover + Cooling system	6. Air gun	1. Tool length measurement
2. Automatic lubrication system	7. Work lamp	2. safety door switch
3. Moveable MPG.	8. Warning Light	3. 4th axis rotary table Φ 100mm
4. PC monitor+ keyboard+ mouse	9. Operation Manual	4. Air pressure vise 4"
5. BT30 tool holder *2	10. Operation Manual	5. Vacuum suction cup worktable



## RICH RIVER PRECISION MACHINERY CO., LTD

No. 1, Zhongshe Vil., Houli Dist., Taichung  
City 421016, Taiwan

TEL:04-25569889

FAX:04-25585789

Email:sales1@cncs.com.tw

https://www.rrseiki.com.tw

